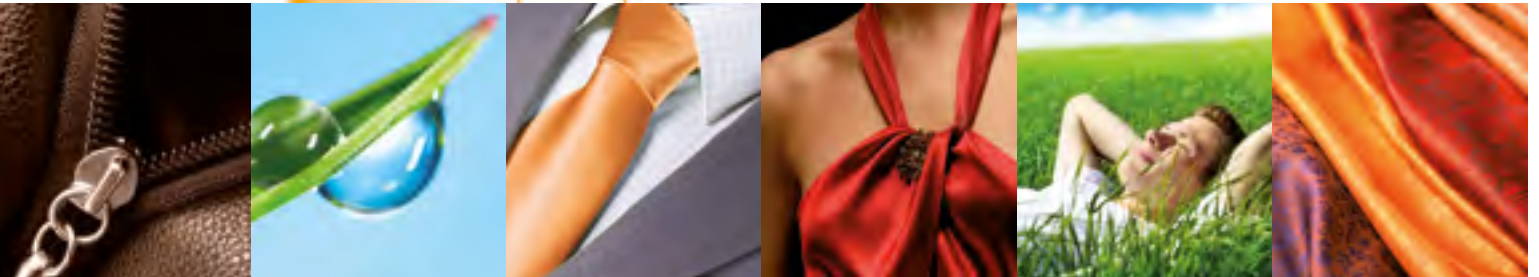


SYSTEMK4



Cleaning Solutions

REALSTAR

Experience and Technology a legacy of excellence!



Since the 1980's **REALSTAR** has been an innovative leader in the manufacturing of dry cleaning machines for the garment care industry.

Our commitment to research and development has resulted in machines recognized throughout the world for their highest standards of quality control, cutting edge technology, and compliance with rigid environmental regulations.

REALSTAR dry cleaning machines are manufactured in the world's most up to date and modern factories located in Bologna, Italy. Our commitment to quality control is second to none.

Every step of the manufacturing process is closely monitored to assure that the highest tolerances are met and exceeded. Only top quality materials and components are used.

The utilization of lasers for precision metal cutting and robots for welding ensure the machines you invest in today will provide years of trouble free service.

REALSTAR builds machines designed for use with all of the popular solvents used in the garment care industry.

These machines are available in a wide range of sizes and configurations; all designed to comply with governmental and environmental regulations.

We offer machines that will meet the needs of the largest production facilities as well as the smaller single plants. Most importantly to you, we stand behind our products.

**We know your success is our success!
This is the philosophy upon which we have built our business**



SYSTEM K4

The new dry-cleaning experience

REALSTAR is proud to present our latest addition to our line of high quality, professionally engineered dry-cleaning machines, the **K4.TECH Series**, designed for use with **SOLVON K4** from **KREUSSLER**.

Responsible drycleaners today are tasked with much more than just providing fine quality dry-cleaning to their customers.

It must be done in a manner that is compatible to be highest environmental standards while insuring operational safety as never before.

REALSTAR engineers have collaborated closely with the **KREUSSLER**, know world wide for their innovation in developing chemical products for the dry-cleaning industry, to offer these new machines that will maximize results utilizing their new Class III A solvent, **SOLVON K4**.

KM 315 - K4

Load capacity of 15 Kg (35 Lbs)



The smallest capacity machine in this new series suited for smaller to medium volume plants.

Standard on all models K4.TECH

- 3 self-cleaning tanks
- Floor guard, Solvent safety tray
- Air-operated interlocks and micro-switches on all doors
- Water safety valve DANFOSS
- INVERTER on the motors
- Electronic and self-cleaning Dry Control
- Supplementary Water Separator
- Automatic Soap Pump

- Fractional distillation processing with Vacuum Technology
- Machine prepared to be connected to a Nitrogen bottle (not supplied)
- Microprocessor Computer
- Allowing the operator to install up to 20 programmes
- Control in 14 different languages
- Continuous or temporary distillation
- Electronic temperatures control
- Large choice of filtrations system
- Very big Loading door
- Automatic still wall washing

Superior
results

The new **REALSTAR, K4.TECH** machines will provide superior Dry-cleaning results with the new **SOLVON K4** from **KREUSSLER**.

Brighter colours, soft handle, ease of finishing, this and more you can expect with this newest system!

These new technically advanced machines are compact in design, saving you valuable floor space.

Cycle times have been reduced, providing a reduction in operational costs.

Built to last with the highest quality components possible.

KM 343 - K4

Load capacity of 18 Kg (40 Lbs)

KM 403 - K4

Load capacity of 20 Kg (45÷50 Lbs)

KM 503 - K4

Load capacity of 25 Kg (55÷60 Lbs)



These machines are sized for medium to larger production plants.

Like all of the new Realstar K4.TECH machines, operators can expect fast cycle times, low emission and economies of operational costs.

- Closed circuit with heat pump
- Sound-proofing cover for the fridge unit
- Large double air lint filter
- Electro-steam still system
- Automatic button trap drying system
- Very large Fan
- Fridge Group in three separate sections, for easy and quick maintenance (not available on KM 315 K4)
- Self-Cleaning water separator

STAINLESS STEEL Components

- Still
- Still Condenser
- Button Trap
- Water Separator
- Supplementary water separator
- Solvent filter canisters
- Basket
- Drying Tunnel

SOLVONK4
the halogen-free
solvent.

SOLVONK4 has very different properties from conventional solvents in dry-cleaning. It is a halogen-free, organic solvent with a pureness of > 99 % and excellent cleaning performance. The innovative solvent is not only able to dissolve and absorb lipophilic (fats, greases and oil) but also hydrophilic soil (water soluble soil). Besides the excellent cleaning power of SOLVONK4 the cleaned textiles also have a pleasant and smooth feel. Noticeable is also minimized fiber abrasion during the cleaning process and also less creasing. In Europe **SOLVONK4**, similar to HCS respectively cyclosiloxane D5, underlies the VOC directive, in Germany implemented by the 31st Federal Emission Protection Ordinance (BlmSchV). According to the current status of legislation in Europe **SOLVONK4** is neither a hazardous material nor a hazardous substance! Even after the, as of December 2010, for materials valid CLP classification **SOLVONK4** still does not require any hazardous labeling on the European market. **SOLVONK4** is biodegradable and dermatologically tested with "Very Good". The named properties in combination with a very favorable classification within the framework of the Ordinance on Hazardous Substances are unique and have not been achieved in the past.

KM 703 - K4

Load capacity of 32 Kg (75÷80 Lbs)

KM 803 - K4

Load capacity of 40 Kg (90÷95 Lbs)



Our largest sized machines in this new K4.TECH Series, designed for the largest commercial operations as well as industrial plants, where large volume and quick turnover is crucial



Available OPTIONS on demand

- Automatic Cleaning still with Pump out system
- Still Scraper
- External storage tank for still residue with connections kit
- Built in air compressor
- POLAR SYSTEM – Refrigerating solvent cooling system with FREON
- WATER SOLVENT COOLER – Refrigerating solvent cooling system with WATER
- Steam Traps (standard for USA Market)

- Automatic Start/Stop steam supply to the still
- DOOR LIGHT – Loading door Lighting system with LED (standard for USA Market)
- Nebulizer for additives
- Built in Water Proofing system
- 2nd Automatic soap pump
- Self-Cleaning lint filter
- JET SOLVENT washing system (standard for USA Market)

SYSTEMK4

		KM 315	KM 343	KM 403	KM 503	KM 703	KM 803		KM 315	KM 343	KM 403	KM 503	KM 703	KM 803	
LOAD CAPACITY (Ratio 1:20)	Kg	15	18	20	25	32	40	Lbs	35	40	45÷50	55÷60	75÷80	90÷95	
BASKET															
Volume	lt	285	340	400	500	645	800	cu.ft.	10,1	12	14,11	17,8	22,8	28,5	
Diameter	mm	800	900	1000	1000	1200	1200	inches	31,5	35,5	39,4	39,4	47,3	47,3	
Depth	mm	560	535	510	640	570	710	inches	22	21	20	25,2	22,5	28	
Wash speed	rpm	20÷55	12÷50	12÷50	12÷50	12÷50	28	rpm	20÷55	40	33	33	28	28	
Extract speed	rpm	300÷500	300÷540	300÷540	300÷540	300÷450	300÷450	rpm	300÷500	300÷540	300÷540	300÷540	300÷450	300÷450	
Door opening	mm	500	500	500	500	500	600	inches	20	20	20	20	20	23,6	
TANKS															
Useful volume tank 1	lt	105	110	160	160	240	240	gal	28	29	42	42	63	63	
Useful volume tank 2	lt	105	110	160	160	240	240	gal	28	29	42	42	63	63	
Useful volume tank 3	lt	120	200	200	200	330	330	gal	31,7	53	53	53	87	87	
STILL															
Useful Still Volume at half inspection	lt	145	190	260	260	360	360	gal	38	50	68	68	95	95	
Total Still Volume	lt	180	230	325	325	455	455	gal	47	60	86	86	120	120	
NYLON FILTER															
Volume nylon filter housing	lt	35	55	75	75	75	100	gal	9,2	14,5	20	20	20	26,5	
Nylon filter area	mt ²	2,1	3,9	5,5	5,5	5,5	7,8	ft ²	22,6	42	59	59	59	84	
Filter disks	nr	14	26	39	39	39	52	nr	14	26	39	39	39	52	
PURITAN FILTER															
Volume Puritan filter housing	lt	13	25	25	25	25	25	gal	3,4	6,6	6,6	6,6	6,6	6,6	
Tubes numbers	nr	1	1	1	1	1	1	nr	1	1	1	1	1	1	
Cartridges quantity	nr	1	2	2	2	2	2	nr	1	2	2	2	2	2	
DUAL CARTRIDGE FILTER															
Volume Dual cartridge filter housing	lt	35	55	85	85	85	105	gal	9,2	14,5	22,5	22,5	22,5	27,8	
Tubes numbers	nr	1	1	1	1	1	1	nr	1	1	1	1	1	1	
Cartridges quantity	nr	1	2	3	3	3	4	nr	1	2	3	3	3	4	
ELECTRIC POWER															
			400V 3ph 50Hz				400V 3ph+N 50Hz				220V 3ph+N 60Hz				
Working power (ELECTRIC Machine)	Kw	24	34,5	39	39	-	-	Kw	24	34,5	39	39	-	-	
Maximum Amperage in ELECTRIC Version	Amps	50	70	80	80	-	-	Amps	85	110	125	125	-	-	
Working power (STEAM Machine)	Kw	6,5	10,5	13,5	13,5	16	16	Kw	6,5	10,5	13,5	13,5	16	16	
Maximum Amperage in STEAM Version	Amps	18	35	40	40	50	50	Amps	35	45	55	55	65	65	
*Wash/Extract motor (with Inverter)	Kw	3	3,5	5,5	5,5	6,1	6,1	Hp	4	4,7	7,5	7,5	8,1	8,1	
Solvent pump motor	Kw	0,55	0,75	0,75	0,75	1,1	1,1	Hp	0,75	1	1	1	1,5	1,5	
Fan motor (with Inverter)	Kw	1,5	2,25	2,25	2,25	3	3	Hp	2	3	3	3	5,5	5,5	
Refrigerator compressor	Kw	2,5	3,75	4,85	4,85	4,85	4,85	Hp	3,35	5	6,5	6,5	6,5	6,5	
Nylon filter motor	Kw	0,55	0,55	0,55	0,55	0,55	0,55	Hp	0,75	0,75	0,75	0,75	0,75	0,75	
Vacuum Pump Motor	Kw	0,38	0,38	0,38	0,38	0,38x2	0,38x2	Hp	0,5	0,5	0,5	0,5	0,5x2	0,5x2	
Blower for button trap drying	Kw	0,55	0,55	0,55	0,55	0,55	0,55	Hp	0,75	0,75	0,75	0,75	0,75	0,75	
Drying Heating elements	Kw	9	12	12	12	-	-	Kw	9	12	12	12	-	-	
Still electric elements	Kw	9	12	13,5	13,5	-	-	Kw	9	12	13,5	13,5	-	-	
Steam Boiler Working	BHP	2,5	2,5	3	3	3,5	3,75	BHP	2,5	2,5	3	3	3,5	3,75	
CONNECTIONS SUPPLY															
Compressed air inlet	∅	1/4"	1/4"	1/4"	1/4"	1/4"	1/4"	∅	1/4"	1/4"	1/4"	1/4"	1/4"	1/4"	
Water inlet	∅	3/4"	1"	1"	1"	1"	1"	∅	3/4"	1"	1"	1"	1"	1"	
Water outlet	∅	3/4"	1"	1"	1"	1"	1"	∅	3/4"	1"	1"	1"	1"	1"	
Steam Still and heater inlet	∅	1/2"	1/2"	1/2"	1/2"	1/2"	1/2"	∅	1/2"	1/2"	1/2"	1/2"	1/2"	1/2"	
Condensat Still and heater outlet	∅	1/2"	1/2"	1/2"	1/2"	1/2"	1/2"	∅	1/2"	1/2"	1/2"	1/2"	1/2"	1/2"	
MACHINES DIMENSIONS															
Width front Machine	mm	1560	2000	2140	2140	2360	2360	inches	61,4	78,7	84,3	84,3	93	93	
Depth	mm	1450	1550	1740	1740	2025	2025	inches	57,1	61	68,5	68,5	79,8	79,8	
Height Without Fan	mm	-	2100	2095	2095	2345	2345	inches	-	79,7	82,5	82,5	92,3	92,3	
Height With Fan	mm	2125	2195	2285	2285	2580	2580	inches	84	86,4	90	90	101,6	101,6	
MACHINES WEIGHTS															
Empty machine weight	Kg	1340	1830	2100	2180	2840	2950	lbs	2954	3571	4320	4565	6051	6295	
Machine weight with solvent	Kg	165	2390	2660	2740	3620	3730	lbs	3637	5621	6857	7100	9788	10030	
Static charge on the floor with solvent	Kg/m ²	783	771	714	736	757	780	lbs/ft ²	160	60	46	47	39	40	
Dynamic charge on the floor (+10%)	Kg/m ²	1130	1120	1081	1178	1140	1242	lbs/ft ²	231	71	57	60	51	54	
Packaged machine weight	Kg	1430	2110	2250	2520	3220	3330	lbs	3153	4188	4938	5180	6680	6922	
Noise Level	dB (A)	70	70	70	70	70	70	dB (A)	70	70	70	70	70	70	

* Power changes accordingly to the use of the machine



Via Verde 7/D
 40012 Calderara di Reno - Bologna - Italy
 tel +39 051 6814820
 Fax +39 051 6814322
 sales@realstar.it
 www.realstar.it